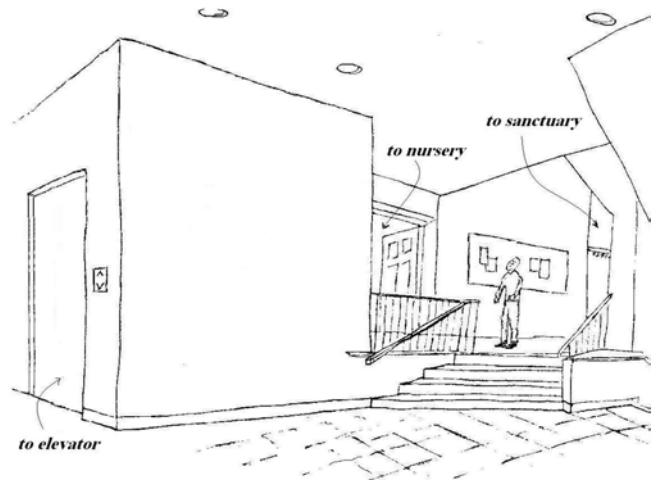


# *Renewing the Legacy for Future Generations*

*The new addition will provide a multi-point elevator for easy access to all levels of the building, as well as needed upgrades to the nursery, fellowship hall, kitchen, bathrooms and new rooms for Sunday School, youth programs, choir and prayer.*



*New Entry Way*

*Please consider joining with us in renewing the legacy of Jericho Congregational Church for future generations.*

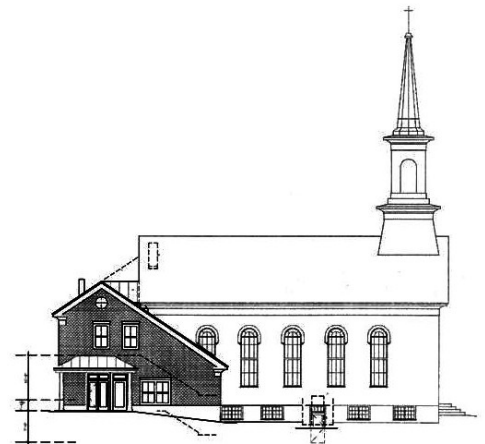
Jericho Congregational Church  
PO Box 1022  
Jericho Center, VT 05465  
Phone: (802) 899-4911  
E-mail: [jccoffice@adelphia.net](mailto:jccoffice@adelphia.net)  
[www.jccvt.org](http://www.jccvt.org)



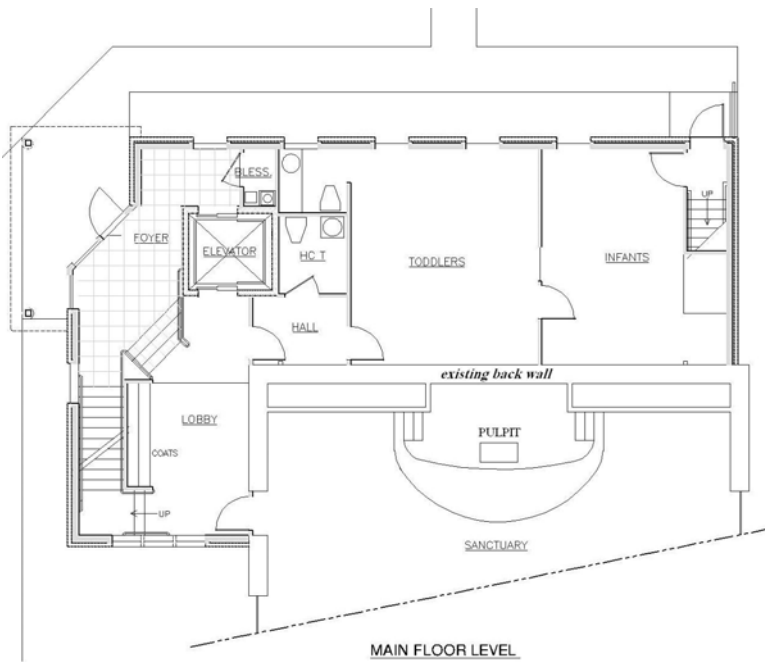
**Gathered in 1791**

## **Jericho Congregational Church Building Addition**

*Built in the 1830's,  
Jericho Congregational Church  
stands as a testimony to  
God's faithfulness and provision.*



**New Addition Sketch**

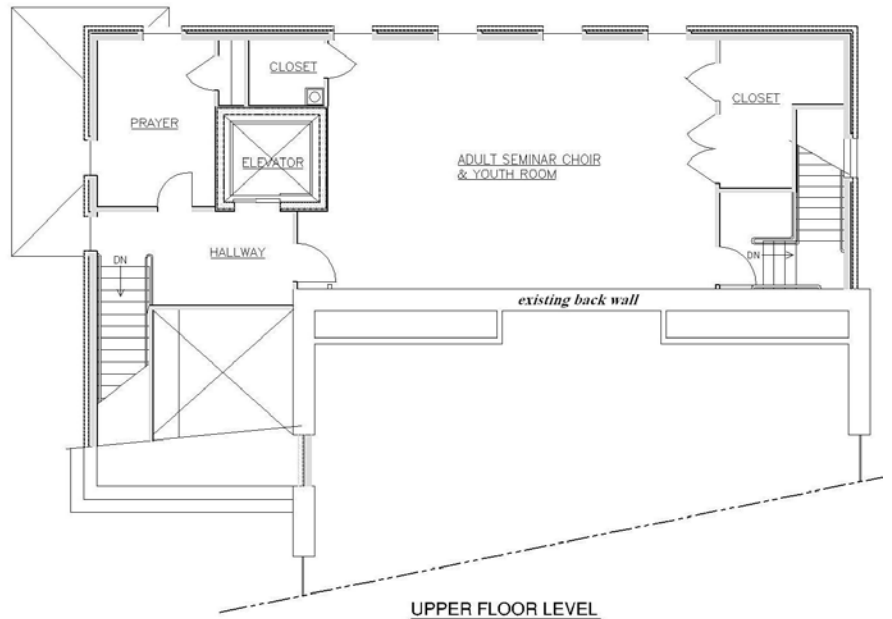


## Main Level

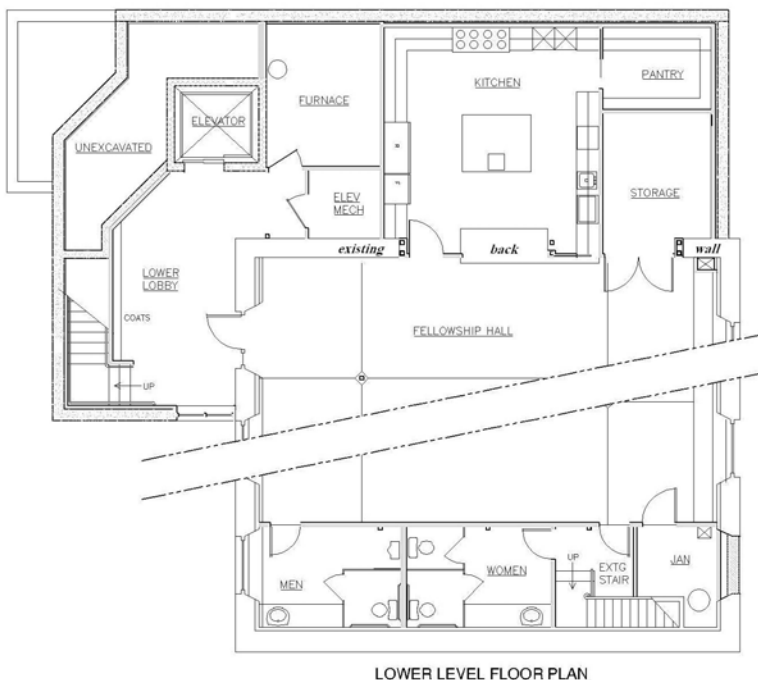
*A spacious lobby will serve as a place to hang coats and view bulletin board information. The new elevator will provide easy access to the sanctuary, nursery, multi-use room, prayer room and fellowship hall. The new design will also include an accessible bathroom on the main level.*

## Upper Level

*The upper level can be reached by the elevator or stairs. The multi-use room can be used for adult Sunday School class, youth group meetings or choir practice. A small prayer room and three storage rooms are also on this level.*



UPPER FLOOR LEVEL



LOWER LEVEL FLOOR PLAN

## Lower Level

*The fellowship hall will be more spacious both in floor space and ceiling height. The lower level will include a modern kitchen with walk-in pantry and new appliances, men's and women's easily accessible bathrooms, as well as storage and furnace rooms.*