



**FOOD FOR  
THE HUNGRY**

**CHURCH  
PARTNERSHIPS**





## CHURCH PARTNERSHIPS

### Ending poverty, together.

At Food for the Hungry (FH), we have a vision to see all forms of human poverty ended worldwide. We believe that through collaboration, we can do more to move in the lives of the vulnerable.

That's where you and your church come in.

Strengthened by our identity in Christ, a Church Partnership combines your church's heart for the poor with FH's global experience. We connect your church to one community in the developing world that is suffering under the weight of poverty.

We believe the church plays a vital role in a community's restoration.

Not only are Church Partnerships a unique opportunity for your church to engage with the world, but together, we can create lasting change and hope for a brighter future. Because when a community is equipped to care for its most vulnerable members, everyone is served and poverty is eliminated.

**Join us in the fight to eliminate poverty worldwide.**



## WHO WE ARE

---

Food for the Hungry (FH) seeks to end ALL forms of human poverty by going into the hard places and closely walking with the world's most vulnerable people. We have been serving through purposeful relief and development for over four decades. We believe in the fight against poverty, which is why we serve the vulnerable in over 20 countries globally. We're moved and inspired by our Christian belief that every person has intrinsic value and that it's our responsibility to advocate for the poor and marginalized.

## OUR VALUES

---

- 1. We follow Jesus:** We are ambassadors of Jesus in our thoughts, words, and deeds.
- 2. Our Work is Relational:** We pursue reconciled relationships of grace with those with whom we work, partner, and serve.
- 3. We Invest Wisely and Focus on Results:** We are stewards in God's Kingdom and strive to invest all resources to maximize missional impact.
- 4. We Serve With Humility:** We recognize the dignity of others and put their interests first.
- 5. We Pursue Beauty, Goodness, and Truth:** In a broken world, we are witnesses through our relationships and the work of God's beauty, goodness, and truth.

## WHAT WE DO

---

We provide life-changing resources such as clean water, medical aid, food, equal educational opportunities for girls and boys, vocational training, and empowerment in the midst of unimaginable hardships. Our view of poverty is holistic and complex. We honor the people we serve by inviting them to contribute to the process. We are grateful to be invited into the communities we serve and work side-by-side with local leaders, churches, and governments in responding to their needs with transformative solutions.

## OUR APPROACH

---

### **We are child focused.**

We believe that when a community is equipped to care for its most vulnerable members, everyone is served and poverty is eliminated. That's why we seek to develop communities by focusing on children and child sponsorship.

### **We go to the hard places.**

FH seeks to end ALL forms of human poverty by going into the hard places and closely walking with the world's most vulnerable people.

### **We have an exit strategy.**

We're proud of the communities we enter, but more than that, we're proud of the ones we exit. These are the communities where extreme poverty no longer has a seat at the table. They're self-sustaining and living out God's purpose for their lives.

We celebrate with them and then we intentionally seek out the next community suffering under the heavy weight of poverty.

## Why Partner with Food for the Hungry?

Jesus cares about the physical and spiritual needs of humanity. At Food for the Hungry (FH), our goal is to enable churches to engage in the work of Christ throughout the world.

## FOUR WAYS YOUR CHURCH CAN PARTNER WITH FOOD FOR THE HUNGRY

### Community to Community (C2C) Partnership: Mutually Transformative Long-term Partnership

We believe being in relationship is where transformation occurs. You can combine your church's heart for the poor and FH's global experience to help graduate a community from extreme poverty. Through a C2C partnership, FH works with the local leaders of a community to design and implement a long-term plan to graduate a community from extreme poverty. Through child sponsorship and other projects specifically for the community, your church will be able to be a part of the transformation. Through annual trips and correspondence, long-term relationships are formed and lives are changed, both in your church and abroad.

### Projects

Has God put a specific issue on the heart of your church? Does irrigation or education strike a chord within congregants? FH has specific projects that will help a community go further and faster in the community's journey to graduate from extreme poverty. If your church has a specific project or region you feel called to respond to, let us know and we can share or develop projects that align with the calling God has put on your heart.



### Disaster Relief

It's not OK that when an unforeseen disaster strikes, people living in extreme poverty are the ones who suffer most. They're faced with unimaginable hardships, are left without the resources they need to rebuild their communities, and often struggle for basic needs such as food and water. FH works with local governments, other NGOs, and our exceptional emergency response team to bring restoration and hope to those affected by natural disasters or those who are living amidst violence, war, famine, and other crisis situations. By donating to disaster response, your church will be part of the solution.

### Child Sponsorship

Child sponsorship is a way to engage your entire church body in the mission of Christ. Each congregant's gift of \$38 each month will bring hope and change to a sponsored child's life and community. Through your sponsorship, you'll help FH assist your child's entire community to provide food, a better education, clean water, and medical treatment to its children.

# How to Start a Community to Community (C2C) Partnership



## Step 1. Choose a Country to Partner In

After choosing a country, FH will provide a community profile with a holistic plan for graduating that community from extreme poverty.



## Step 2. Build Your Team

Invite church members to join this partnership and identify/select leaders who will be committed to leading future projects and trips.



## Step 3. Plan Your Sponsorship Sunday

Select a Sunday service to invite families from your church to support vulnerable families in the sponsored community. Set up a coaching session with FH's church mobilization team. Generate excitement for Sponsorship Sunday through announcements, social media, and inviting people to pray. Plan the details of Sponsorship Sunday (i.e. Creative packet display, selecting a date for your first trip to the field, etc.).



## Step 4. Host Sponsorship Sunday

Share about FH and invite people to join the work that God is doing in the community your church is partnered in. Tell stories and share the impact of sponsorship. Invite people to sign up for an upcoming trip to meet their sponsored children.



## Step 5. Your First Trip

Pray that you experience God in powerful ways and that your people come back changed and ready to follow Christ deeper in their own context. While in your sponsored community, get to know the families, children, and leaders. Afterward, share about the trip with your congregation through photos, videos, and stories. Invite others to sponsor, if they did not sign up during the first Sponsorship Sunday.



I have found the FH staff to be knowledgeable with a holistic, Christ-centered approach to mission. FH's comprehensive care for our teams and ongoing interaction in the community (even when we are not there) has made it easy for our entire church to identify, develop, and celebrate ongoing relationship with individuals as well as the community at large."

**Leland Rounds**

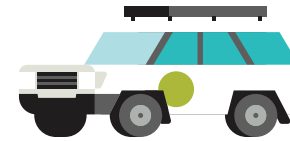
Lead Pastor, New Hope Foursquare Church



Food for the Hungry understands the desperate cycle of poverty as well as any organization I have been exposed to. They understand what it takes to move a community away from cyclical poverty and into a new paradigm of revitalization, spiritual awakening and self-respect."

**Nate Poetzi**

Lead Pastor, Faith Chapel



**WHERE YOU CAN JOIN US**

**AFRICA:** Burundi, Democratic Republic of Congo, Ethiopia, Kenya, Mozambique, Rwanda, South Sudan, Uganda

**ASIA & MIDDLE EAST:** Bangladesh, Cambodia, Indonesia, Vietnam, Lebanon, Philippines, Syria

**LATIN AMERICA & CARIBBEAN:** Bolivia, Dominican Republic, Guatemala, Haiti, Nicaragua, Peru



**FOOD FOR  
THE HUNGRY**



[church@fh.org](mailto:church@fh.org)